



**Suite 709 1,850 SF**

7 REGENT STREET • LIVINGSTON, NJ



## **BUILDING FEATURES**

- Campus-like setting
- Day care on-site
- Full-service cafe
- Minimal loss factor of 1%
- Immediate access to I-280 and Route 10
- Tenant-controlled HVAC

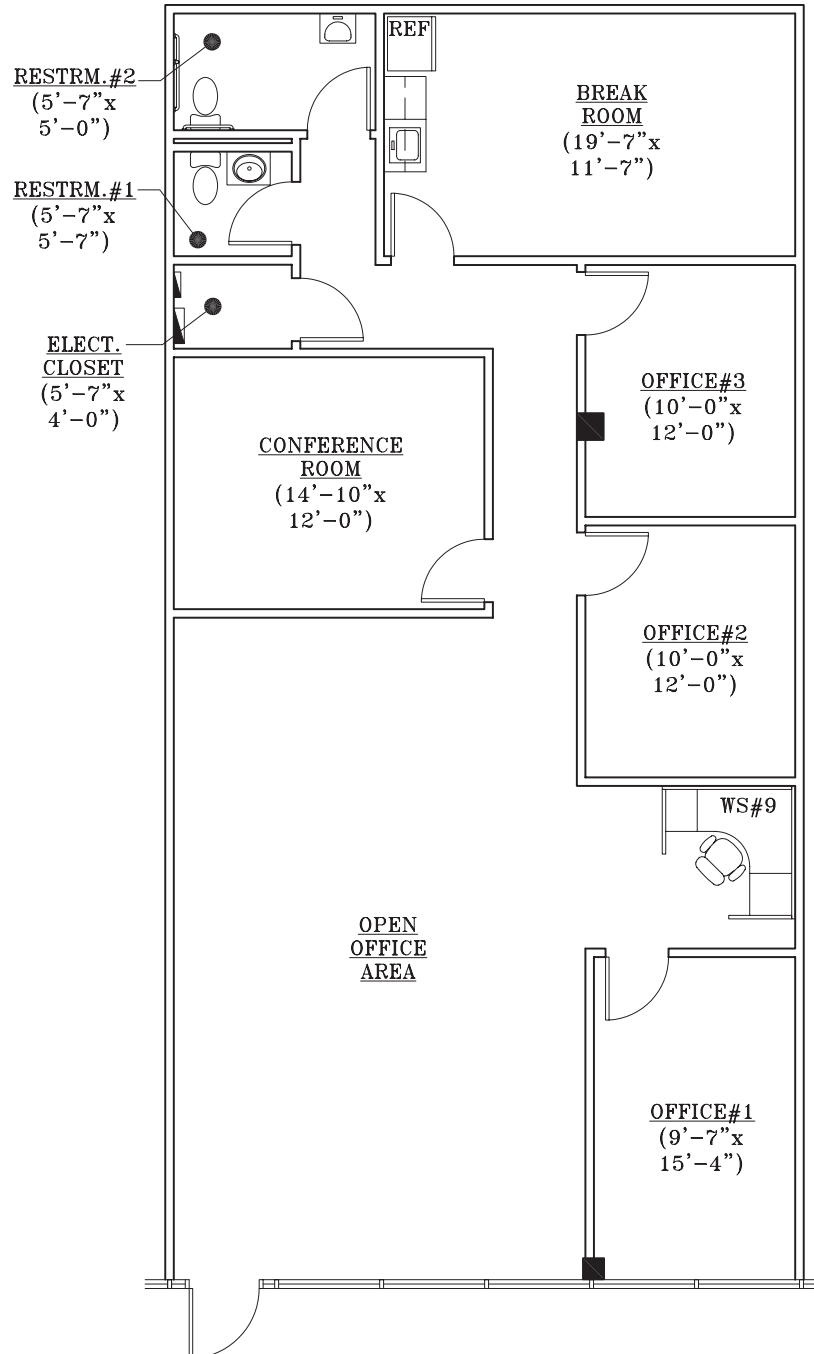
For more info [regentparknj.com](http://regentparknj.com)





## Suite 709 1,850 SF

7 REGENT STREET • LIVINGSTON, NJ



No warranty or representation / subject to errors or omissions.



Eric J. Maurer

973.488.6110

ericm@eastmancompanies.com

eastmancompanies.com



For more info [regentparknj.com](http://regentparknj.com)