



Suite 509 2,401 SF

5 N REGENT STREET • LIVINGSTON, NJ



BUILDING FEATURES

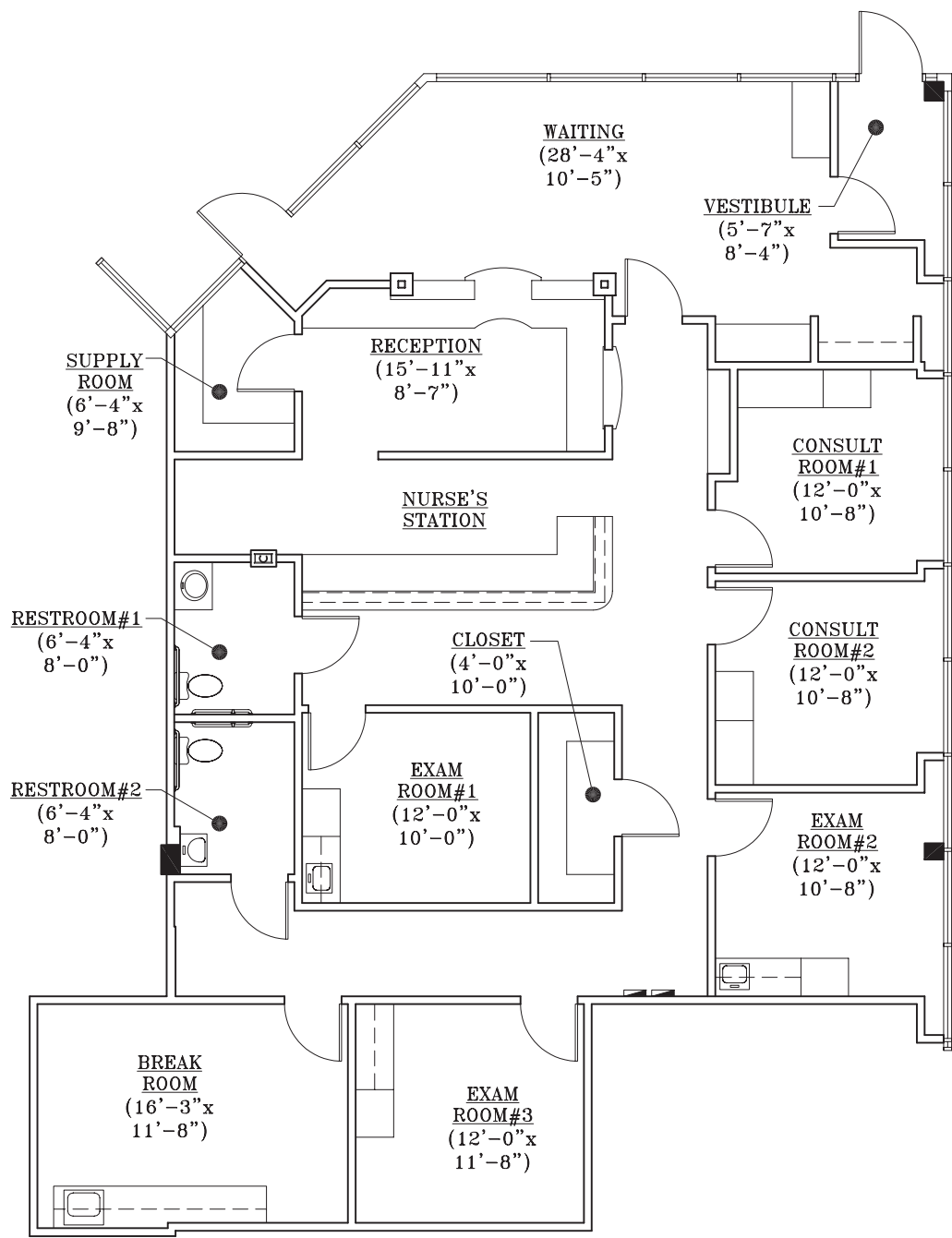
- Campus-like setting
- Day care on-site
- Full-service cafe
- Minimal loss factor of 1%
- Immediate access to I-280 and Route 10
- Tenant-controlled HVAC

For more info regentparknj.com



Suite 509 2,401 SF

5 N REGENT STREET • LIVINGSTON, NJ



No warranty or representation / subject to errors or omissions.



Eric J. Maurer
973.488.6110
ericm@eastmancompanies.com
eastmancompanies.com



For more info regentparknj.com