



where
WORK STYLE
meets
LIFESTYLE

BUILDING FEATURES

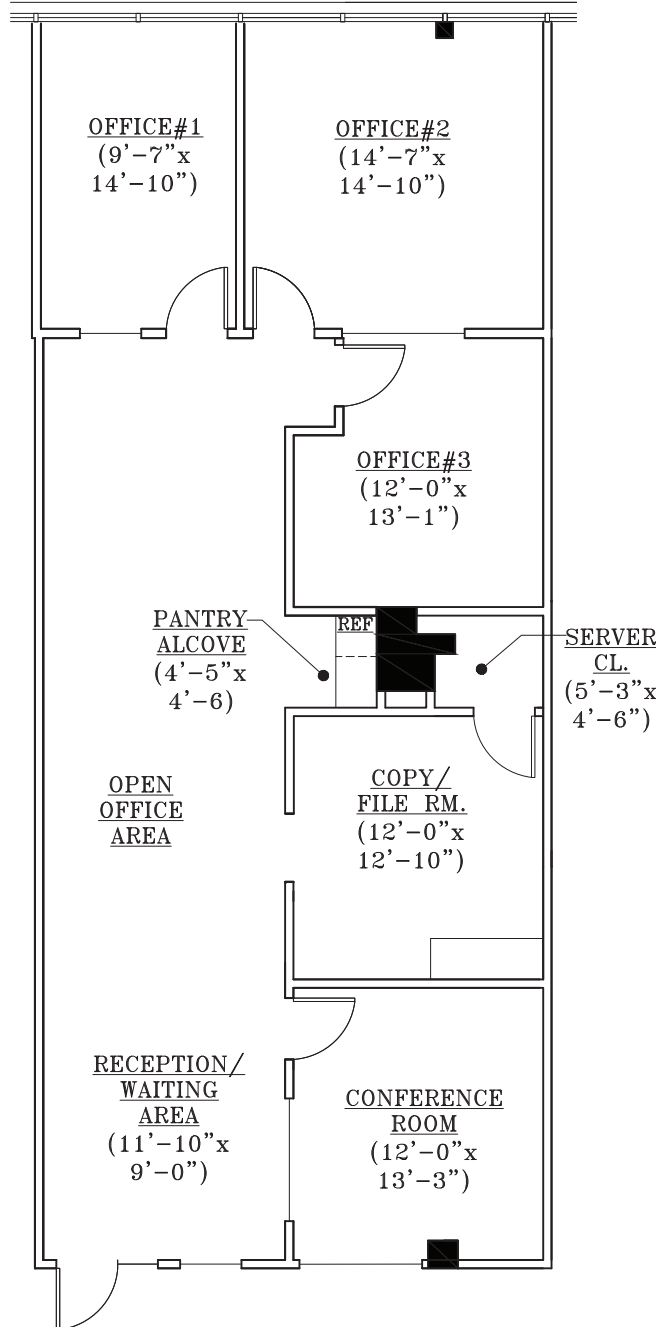
- 160,000 sq. ft. in two buildings connected by a marble 2-story atrium
- Conference room with high speed Wi-Fi
- Full-service, newly-renovated cafeteria
- Fitness amenities; 354Fit and personal training center, Living Fitness
- Immediate access to Route I-280 & Route 10
- Outdoor seating

For more info 354eisenhower.com



Suite 2950 1,878 SF Second Floor

354 EISENHOWER PARKWAY • LIVINGSTON, NJ



No warranty or representation / subject to errors or omissions.



Eric J. Maurer
973.488.6110
ericm@eastmancompanies.com

Jonathan Meisel
732-509-2843
jonathan.meisel@cbre.com



For more info 354eisenhower.com