

# PRESIDENTIAL CENTER

Suite 170 1,672 SF First Floor

293 EISENHOWER PARKWAY • LIVINGSTON, NJ



## BUILDING FEATURES

- Granite and brass lobby
- New tenant lounge
- Next to the Shoppes at the Livingston Circle
- Electronic card access
- After hours visitor's call box
- Immediate access to Route I-280 & Route 10
- Asking \$25.00 PSF plus TE

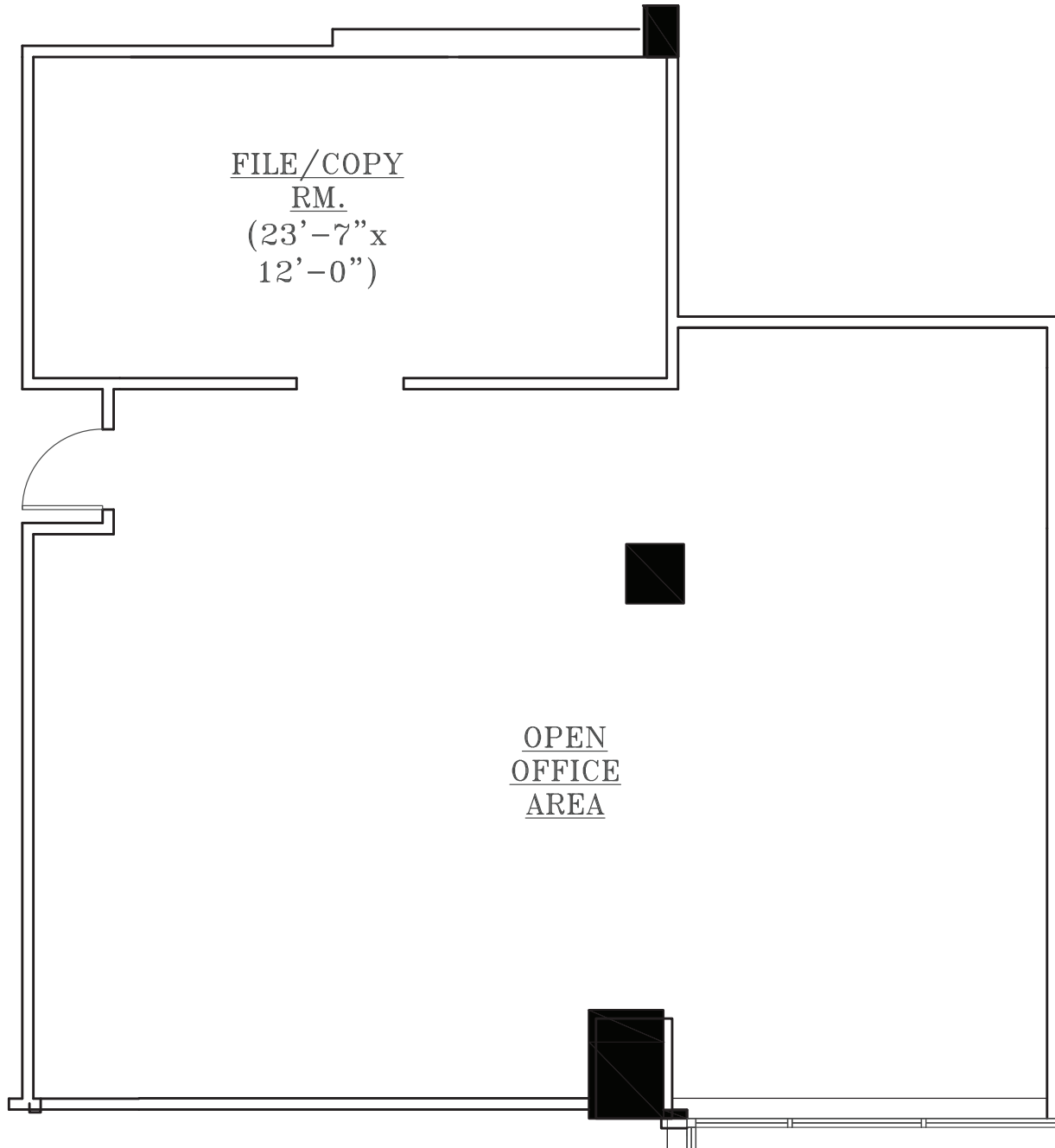
For more info [293eisenhower.com](http://293eisenhower.com)



# PRESIDENTIAL CENTER

## Suite 170 1,672 SF First Floor

293 EISENHOWER PARKWAY • LIVINGSTON, NJ



No warranty or representation / subject to errors or omissions.



Eric J. Maurer  
973.488.6110  
ericm@eastmancompanies.com  
eastmancompanies.com



For more info [293eisenhower.com](http://293eisenhower.com)