



*The coolest*  
little building  
you don't know about

## EXCITING THINGS ARE HAPPENING!



## BUILDING FEATURES

- 69,000 square feet in two-story office building
- Conference room with high speed Wi-Fi
- On-site Cafe
- New indoor and outdoor lounges
- Three car chargers
- Immediate Access to Route 10, Route 24, I-78, I-280, I-287, and the Garden State Parkway
- Day porter—seasonally landscaped
- Outdoor seating

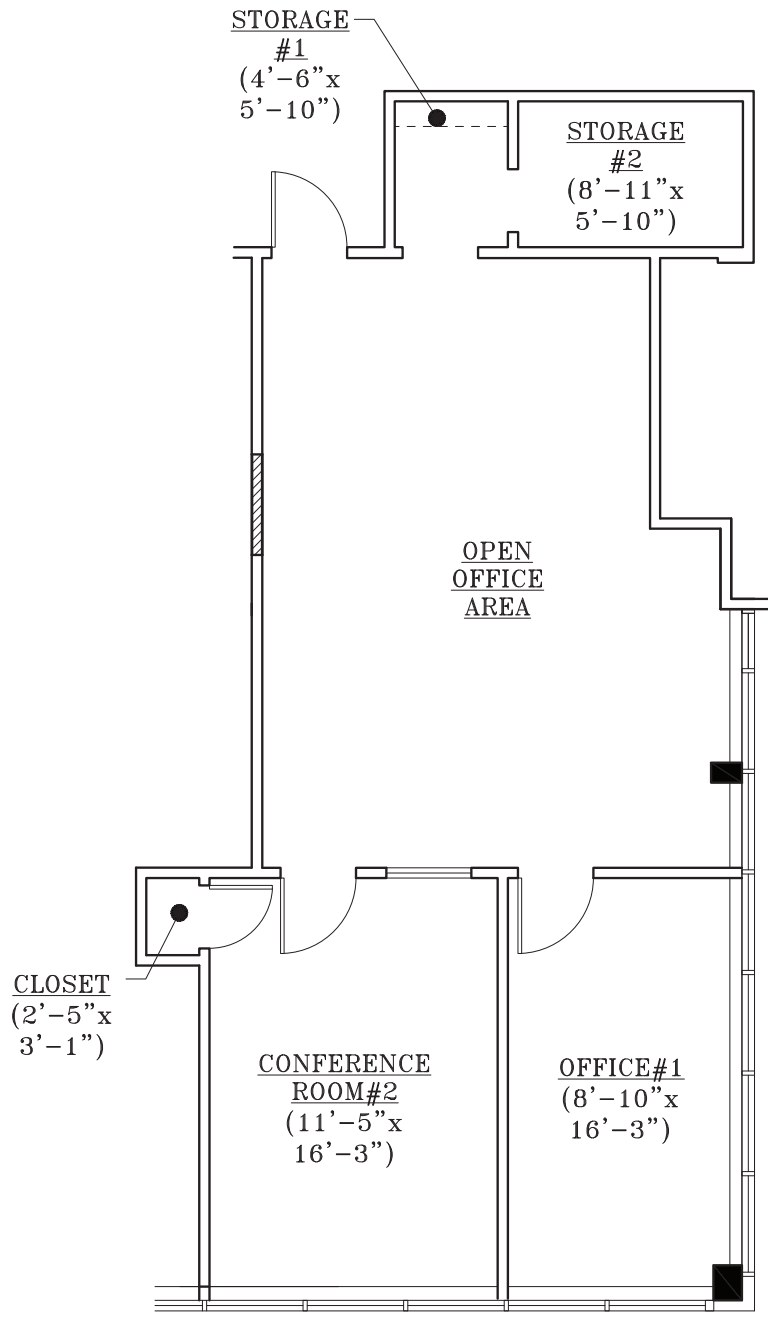
For more info [23vreeland.com](http://23vreeland.com)





## Suite 203 1,193 SF Second Floor

23 VREELAND ROAD • FLORHAM PARK, NJ



No warranty or representation / subject to errors or omissions.



Eric J. Maurer  
973.488.6110  
ericm@eastmancompanies.com

Jonathan Meisel  
732-509-2843  
jonathan.meisel@cbre.com



For more info [23vreeland.com](http://23vreeland.com)