

23

VREELAND

Suite 106 1,260 SF First Floor

23 VREELAND ROAD • FLORHAM PARK, NJ



EXCITING THINGS ARE HAPPENING!



BUILDING FEATURES

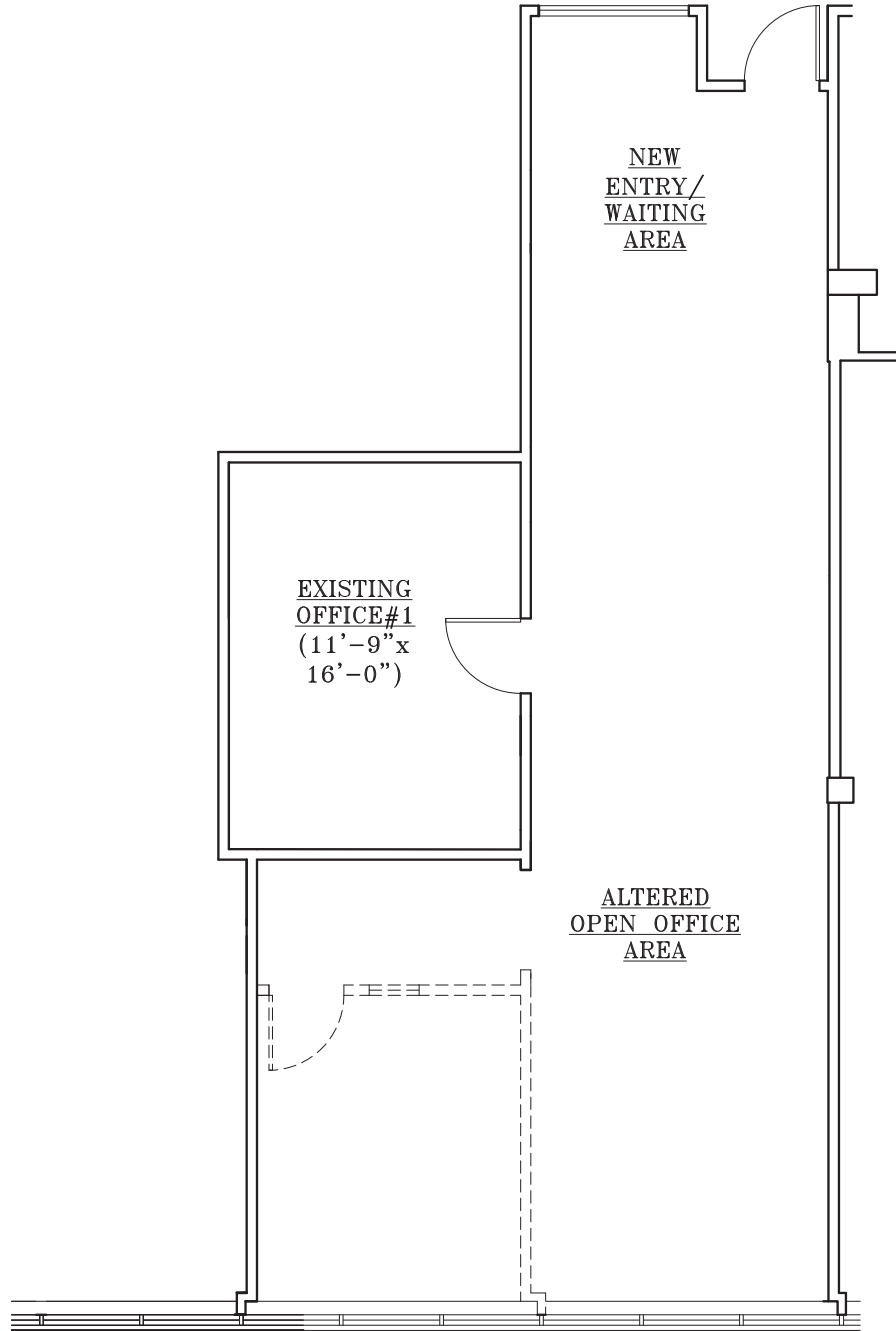
- 69,000 square feet in two-story office building
- Conference room with high speed Wi-Fi
- On-site Cafe
- New indoor and outdoor lounges
- Three car chargers
- Immediate Access to Route 10, Route 24, I-78, I-280, I-287, and the Garden State Parkway
- Day porter—seasonally landscaped
- Outdoor seating

For more info 23vreeland.com



Suite 106 1,260 SF First Floor

23 VREELAND ROAD • FLORHAM PARK, NJ



No warranty or representation / subject to errors or omissions.



Eric J. Maurer
973.488.6110
ericm@eastmancompanies.com

Jonathan Meisel
732-509-2843
jonathan.meisel@cbre.com



For more info 23vreeland.com