

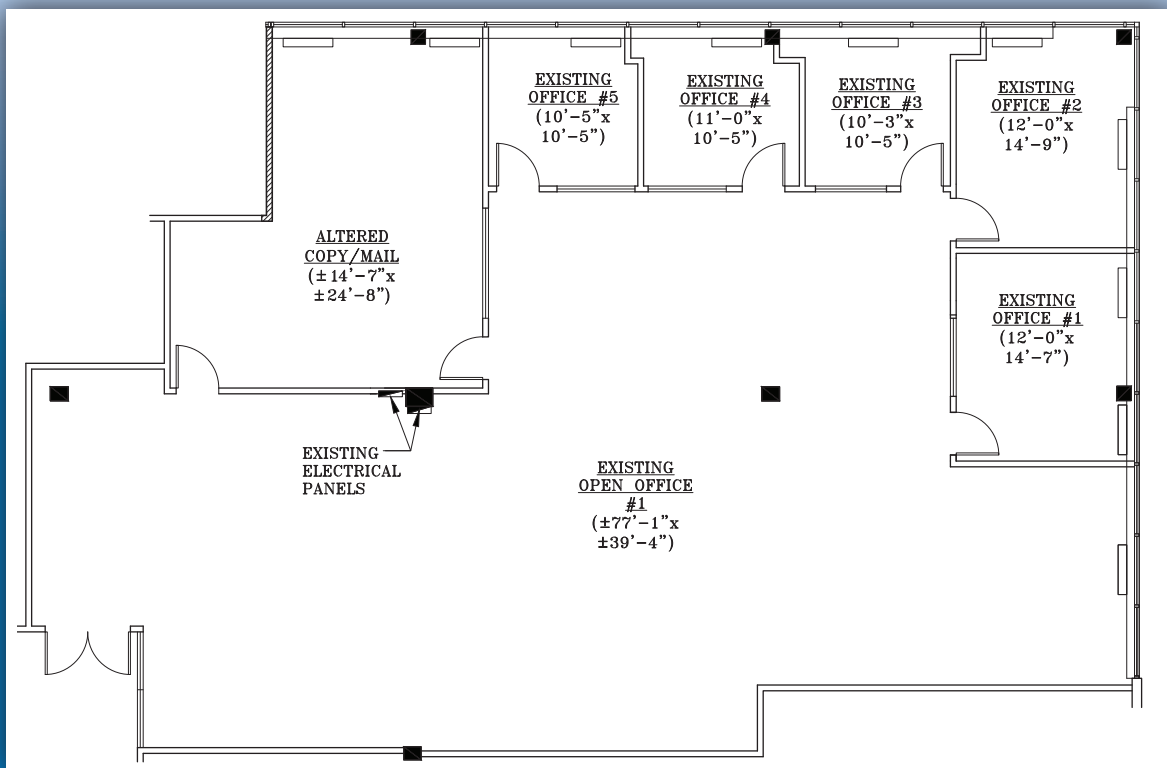
EASTMAN OFFICE CENTER

651 OLD MOUNT PLEASANT AVE • LIVINGSTON, NJ

4,240 square feet available

- 4,240 square feet available on first floor - Suite 170
- Corner Unit
- 50,000 square feet in two-story office building
- Electronic card access after regular business hours
- After hours visitor's call box
- Immediate access to I-280 and Route 10

VIEW THE FULL PROPERTY AT
WWW.EASTMANOFFICECENTER.COM



No warranty or representation / subject to errors or omissions.



For more information, please contact:
Eric J. Maurer, Director of Leasing
(973) 488-6110 • ericm@eastmancompanies.com
www.eastmancompanies.com

