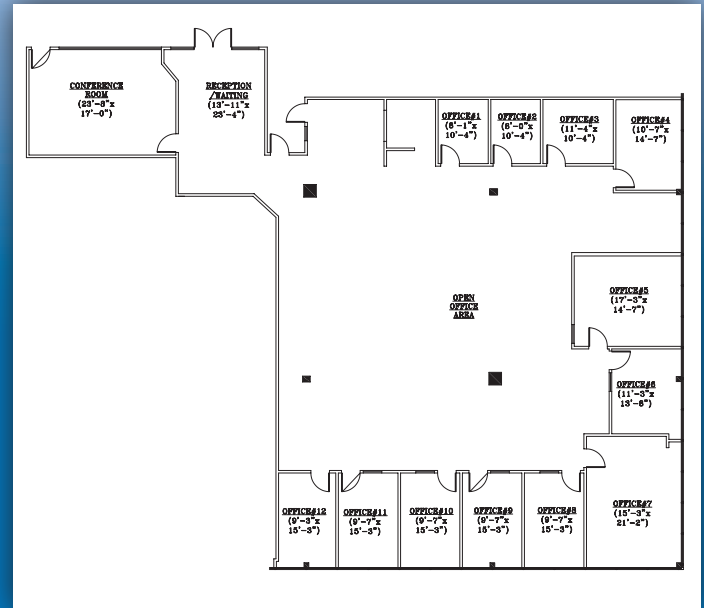


EISENHOWER PLAZA

354 EISENHOWER PARKWAY • LIVINGSTON, NJ

6,788 square feet available

- 6,788 square feet available on second floor - Suite 2800 & 2850
- 160,000 sq. ft. in two buildings connected by a marble 2-story atrium
- Conference room with high speed Wi-Fi access
- Full-service cafeteria
- Electronic card access after regular business hours
- After hours visitor's call box
- Immediate access to Route I-280 and Route 10 (building fronts Eisenhower Parkway)



No warranty or representation / subject to errors or omissions.

VIEW THE FULL PROPERTY AT WWW.354EISENHOWER.COM



For more information, please contact:
Eric J. Maurer, Director of Leasing
(973) 488-6110 • ericm@eastmancompanies.com
www.eastmancompanies.com

