

# 354

EISENHOWER  
PARKWAY

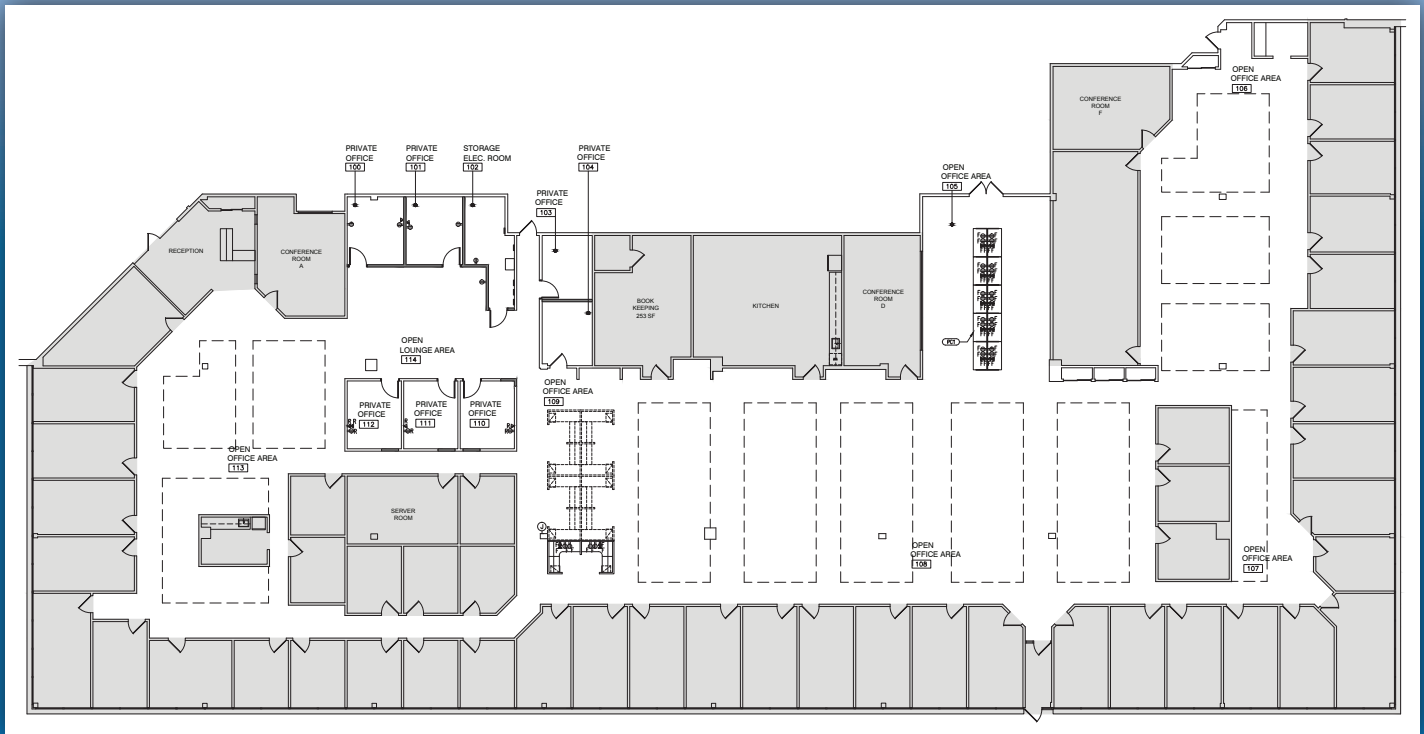
LIVINGSTON, NJ

## 27,000 square feet available

- 27,000 square feet available on First floor - Suite 1850
- 160,000 sq. ft. in two buildings connected by a marble 2-story atrium
- Conference room with high speed Wi-Fi access
- Full-service cafeteria
- Fitness center
- Electronic card access after regular business hours
- Immediate access to Route I-280 and Route 10 (building fronts Eisenhower Parkway)



VIEW THE FULL PROPERTY AT [WWW.354EISENHOWER.COM](http://WWW.354EISENHOWER.COM)



No warranty or representation / subject to errors or omissions.



For more information, please contact:  
Eric J. Maurer, Director of Leasing  
(973) 488-6110 • [ericm@eastmancompanies.com](mailto:ericm@eastmancompanies.com)  
[www.eastmancompanies.com](http://www.eastmancompanies.com)

